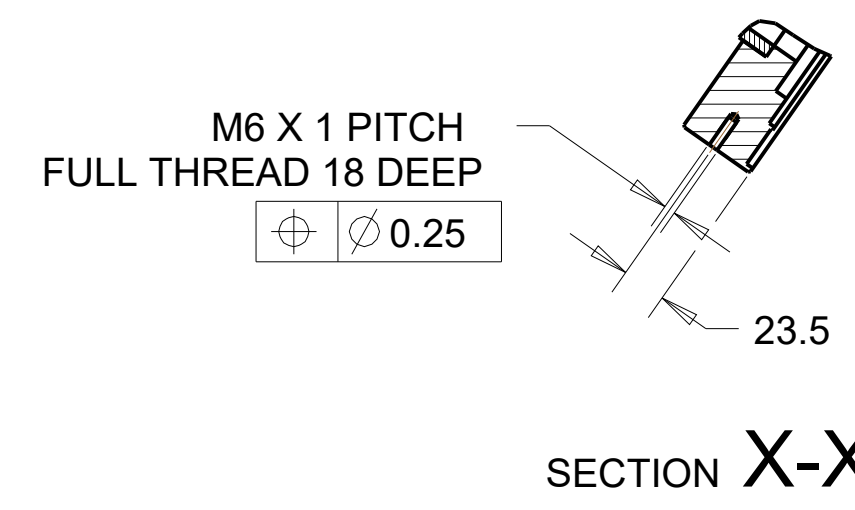
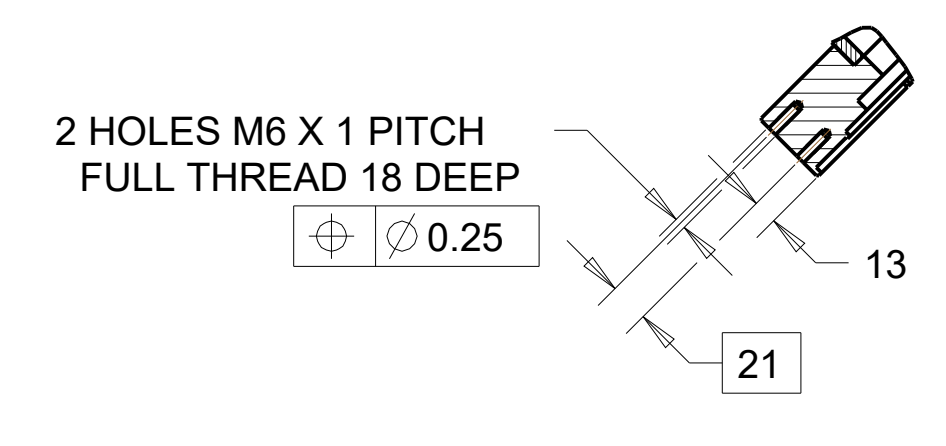
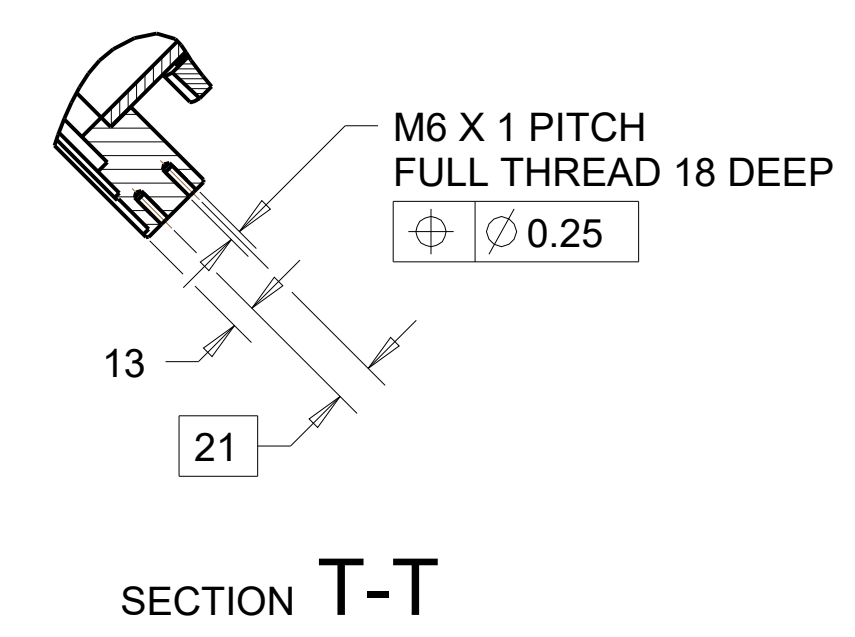
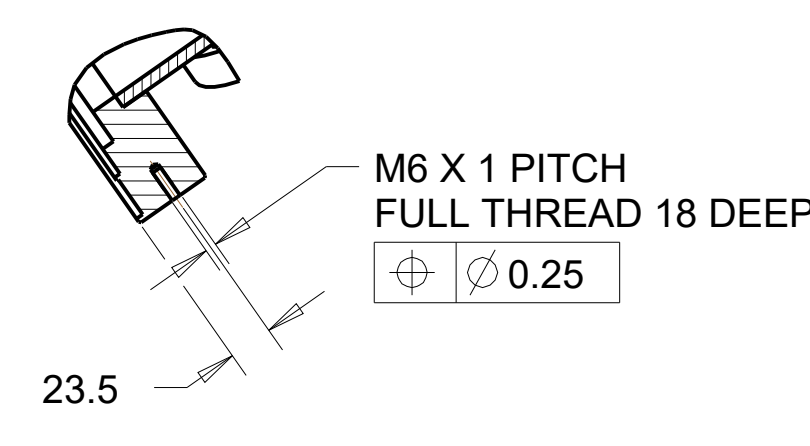
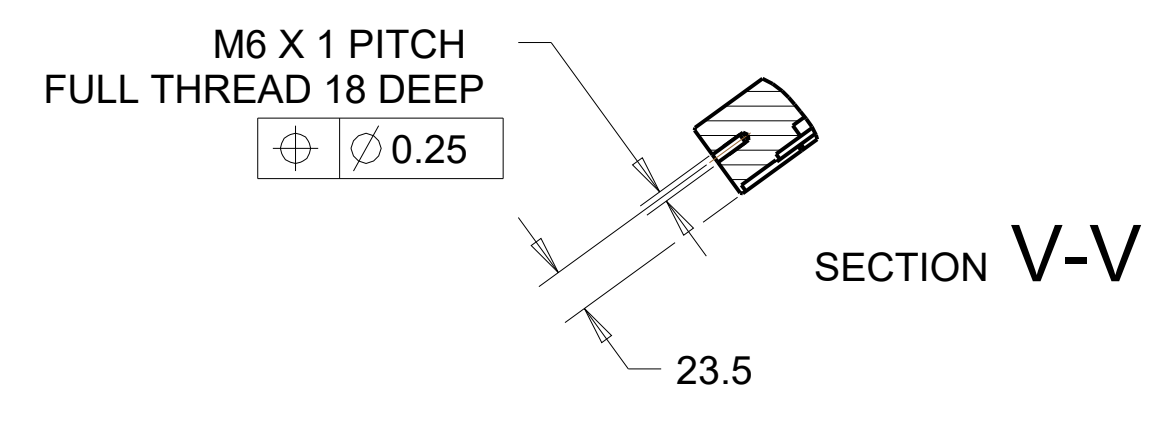
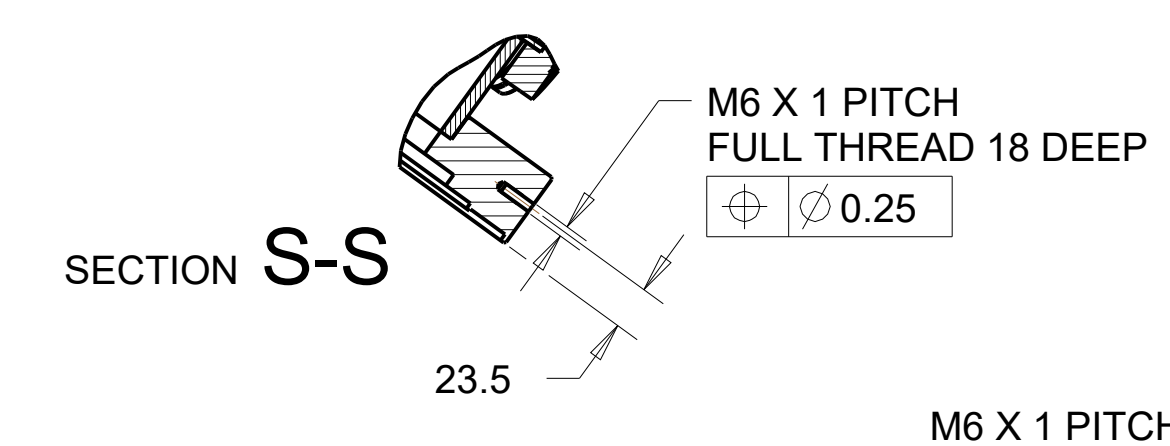
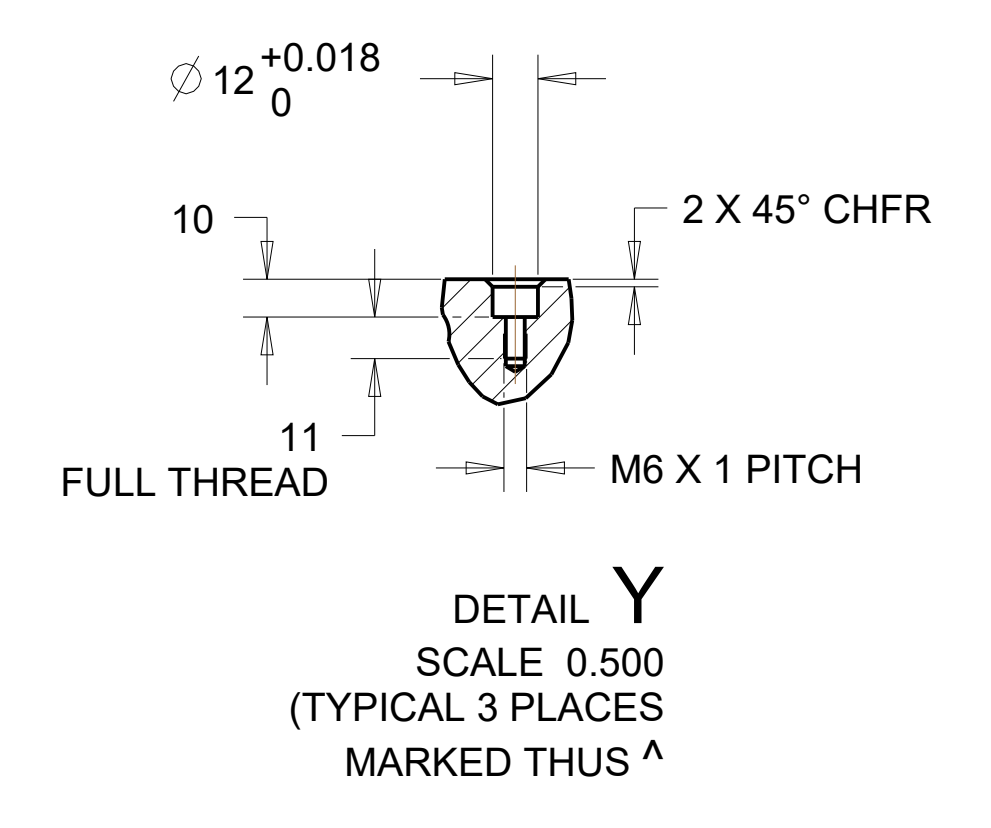
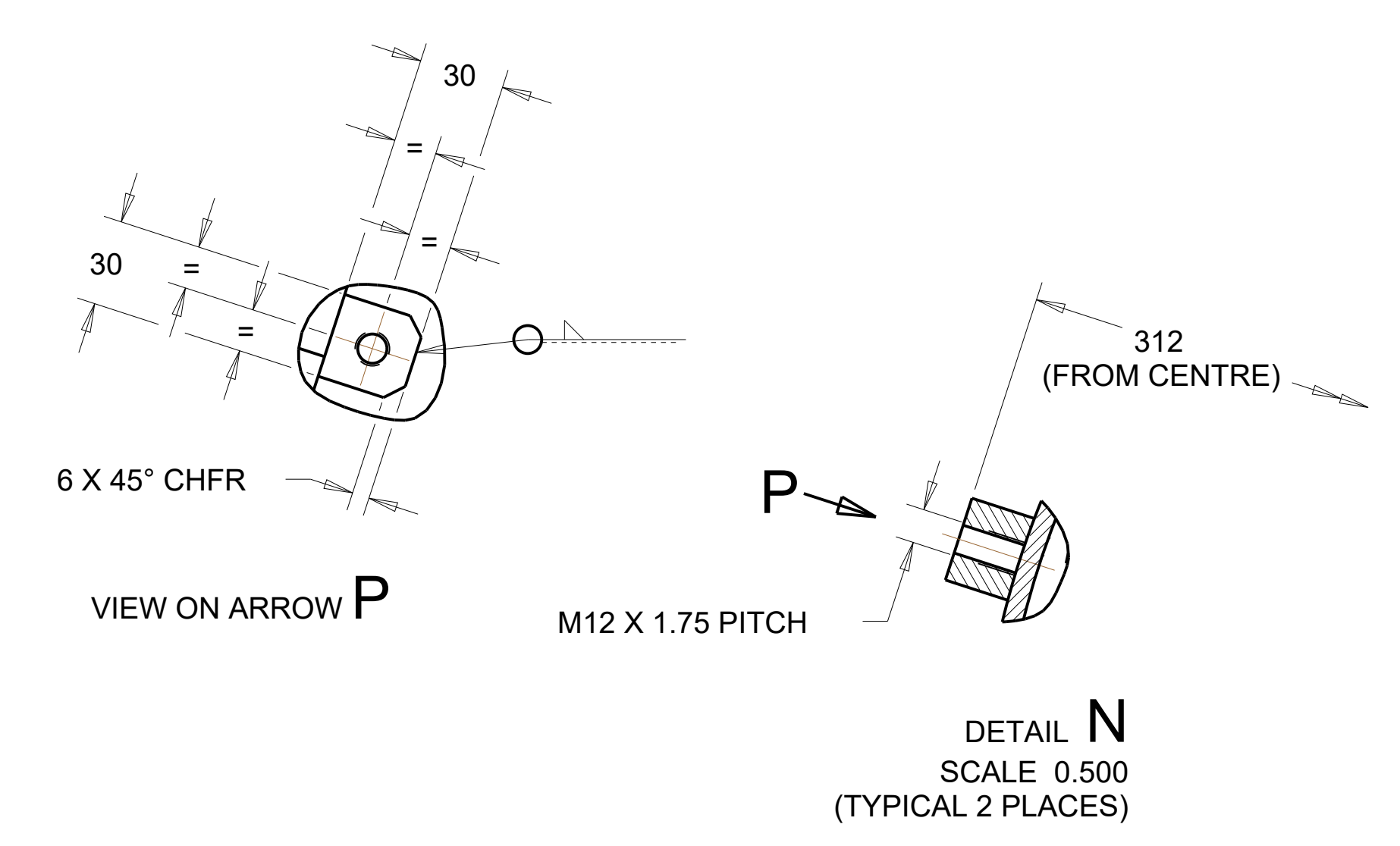
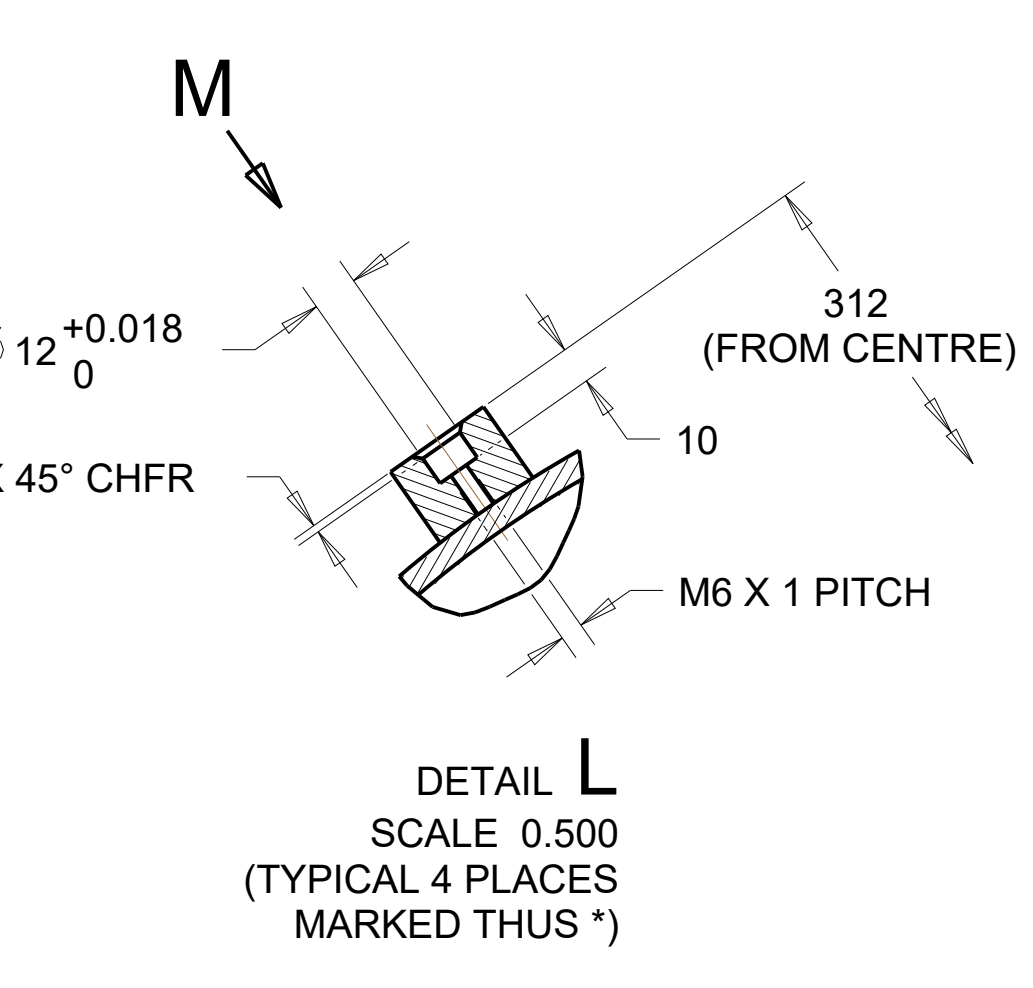
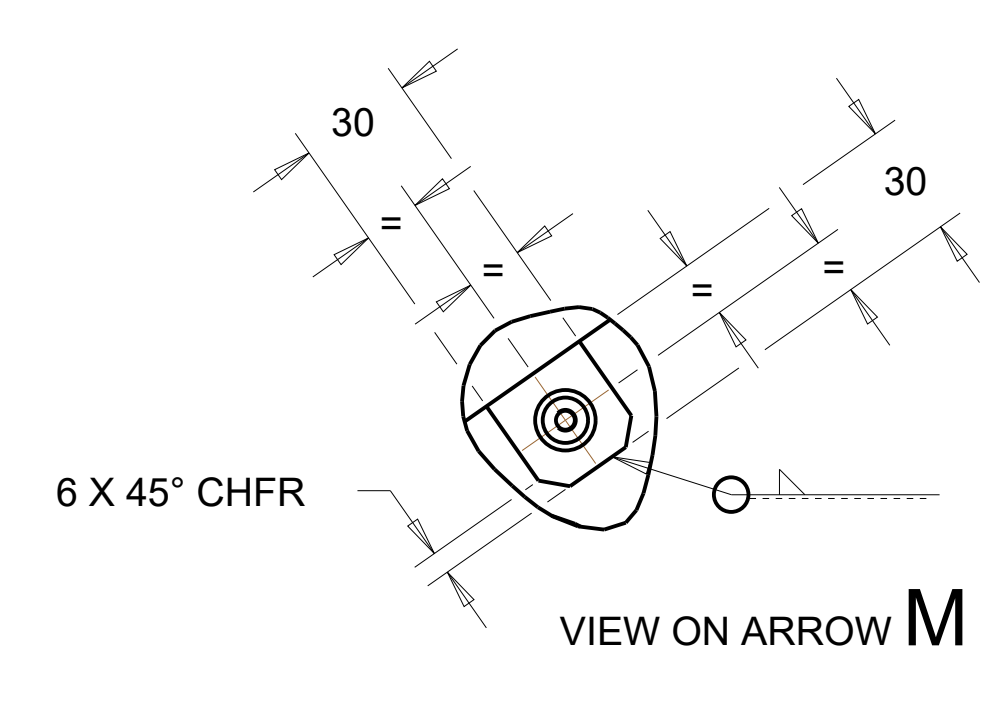
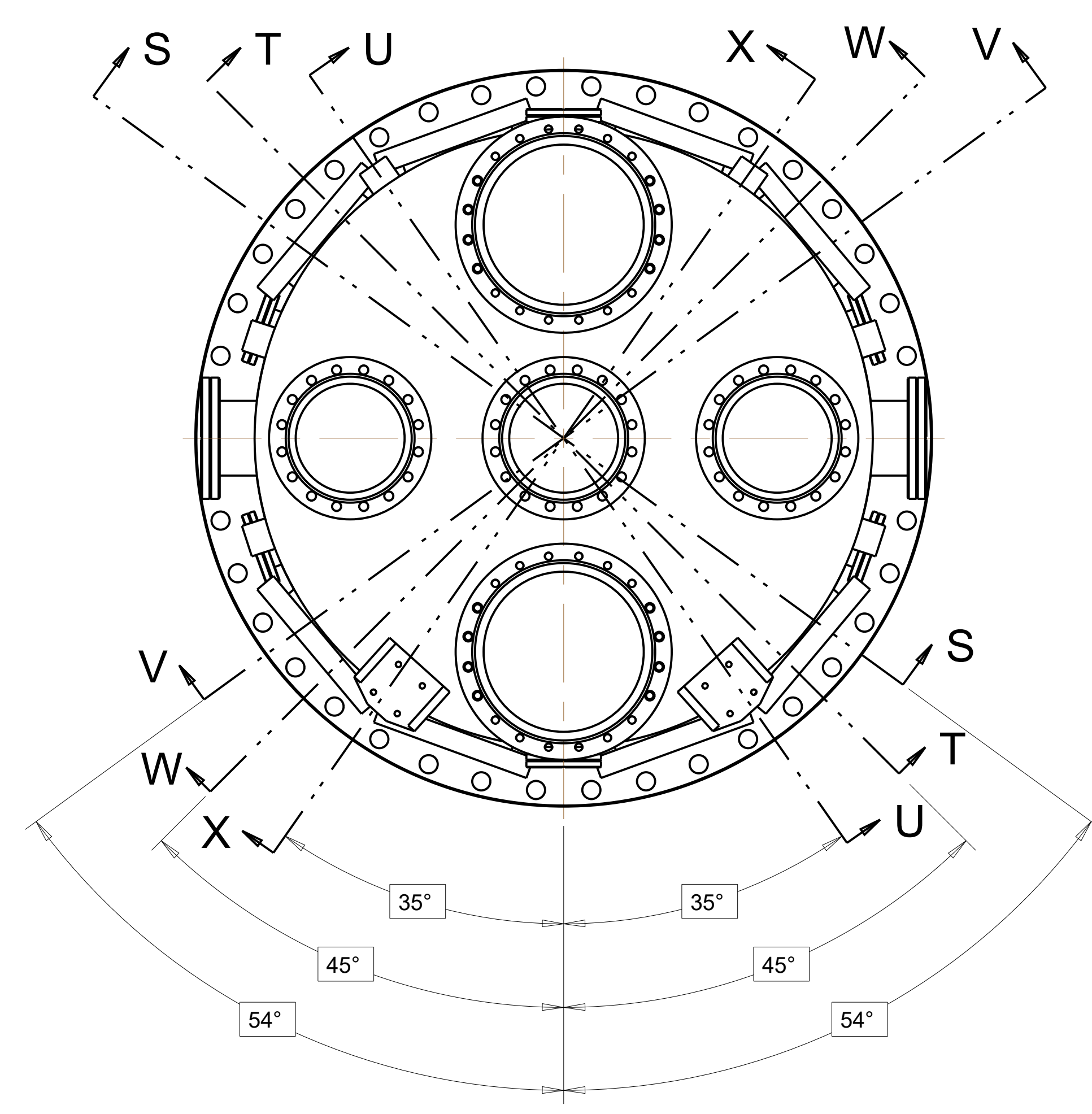
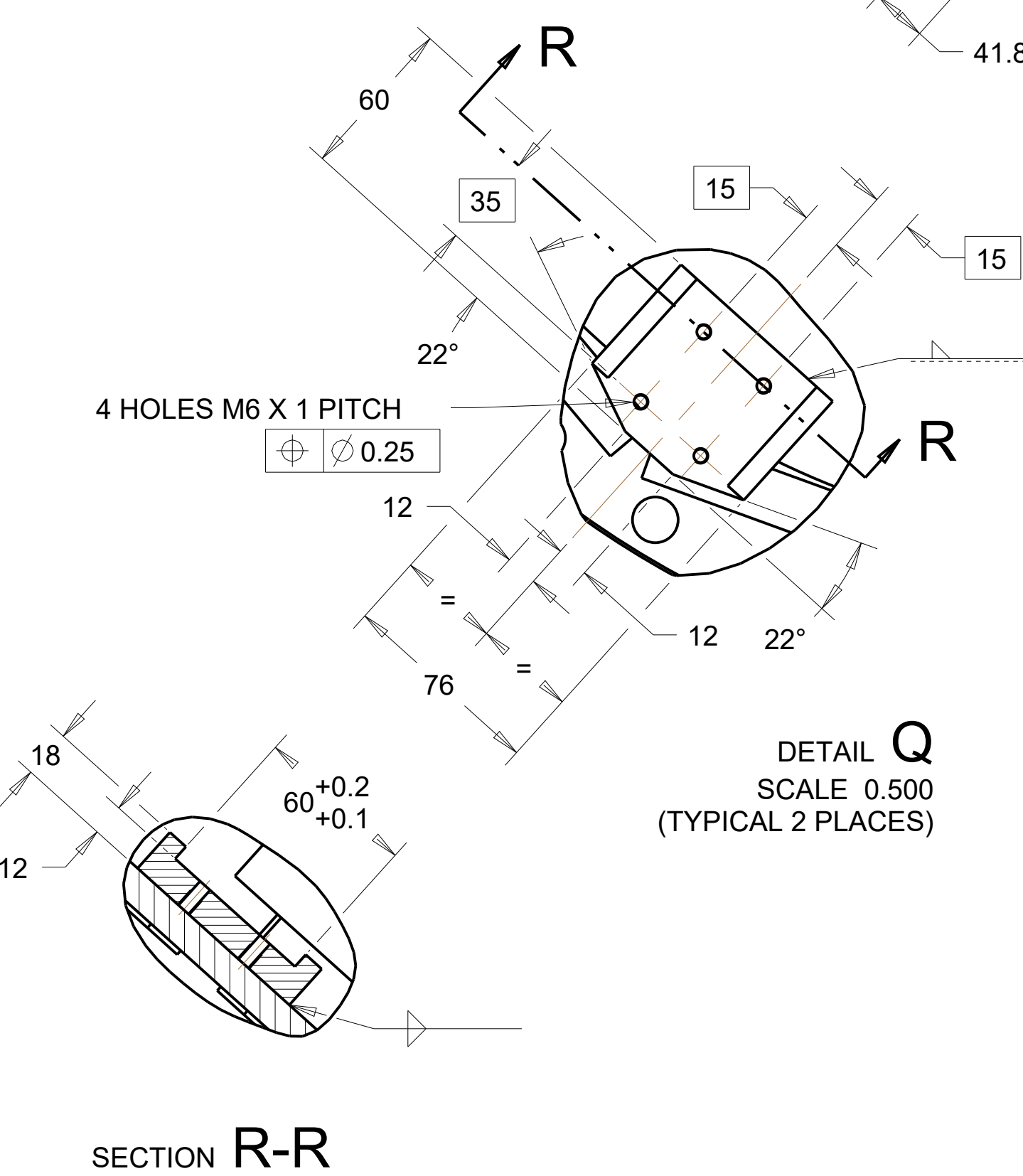
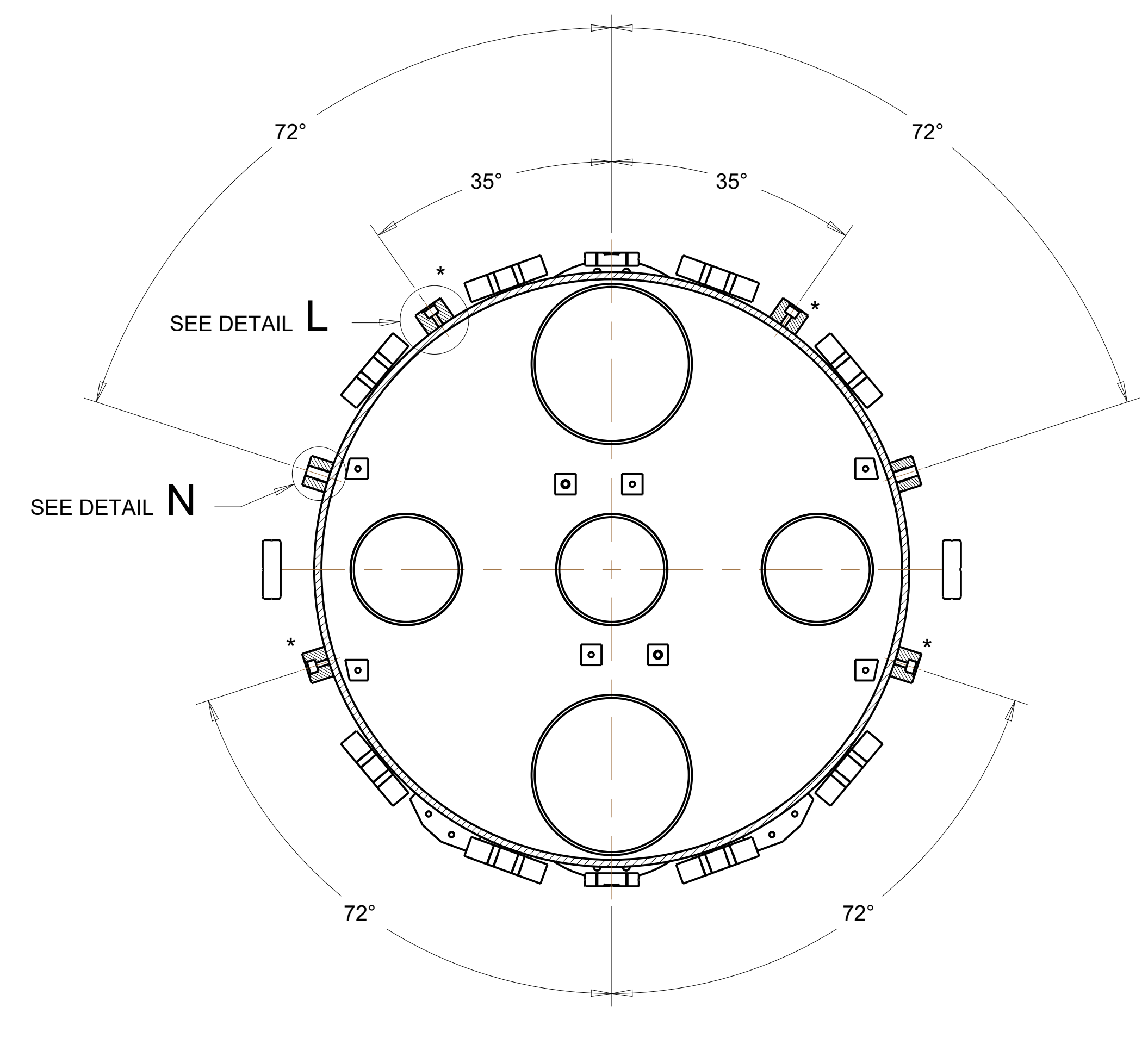
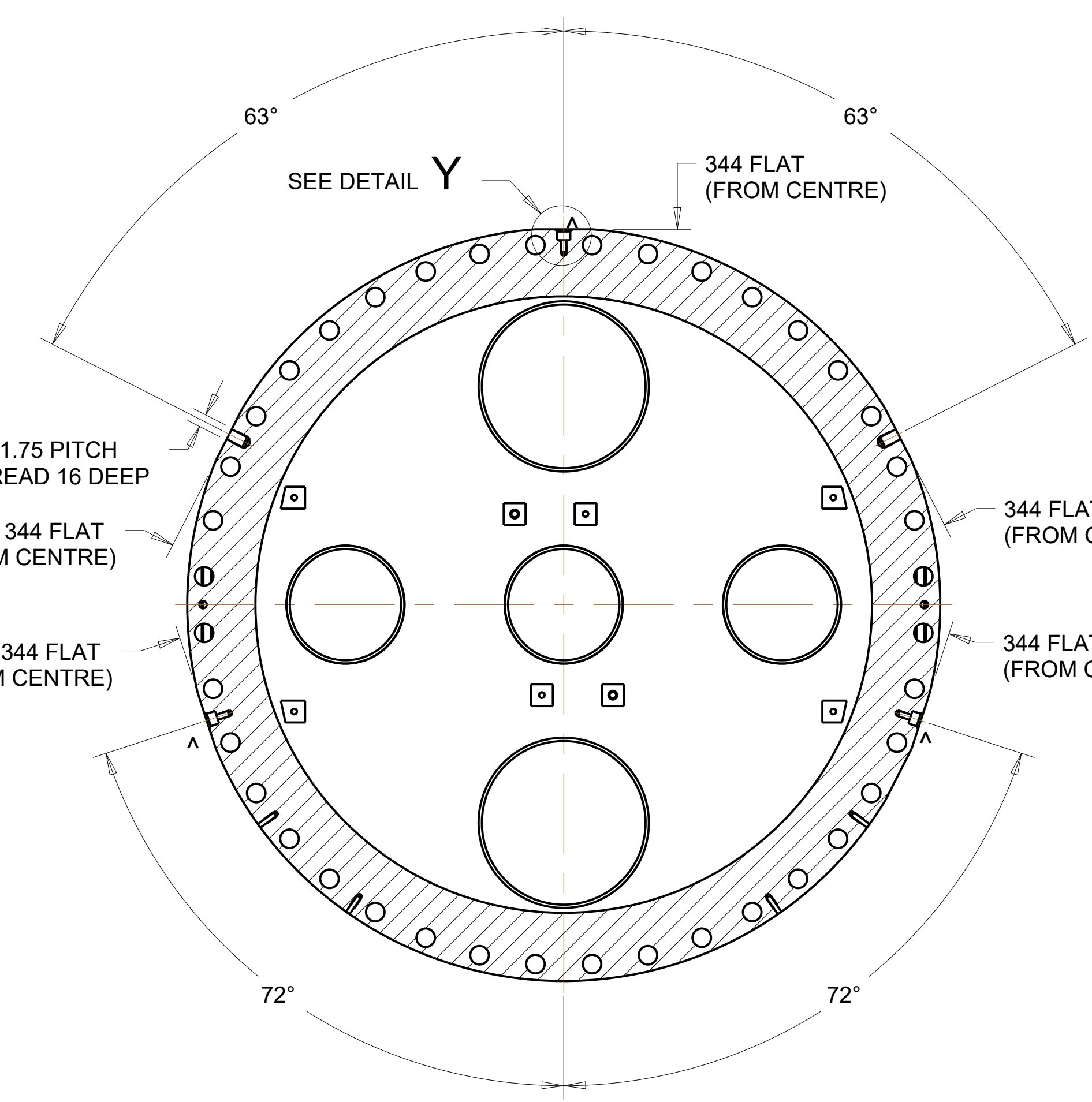
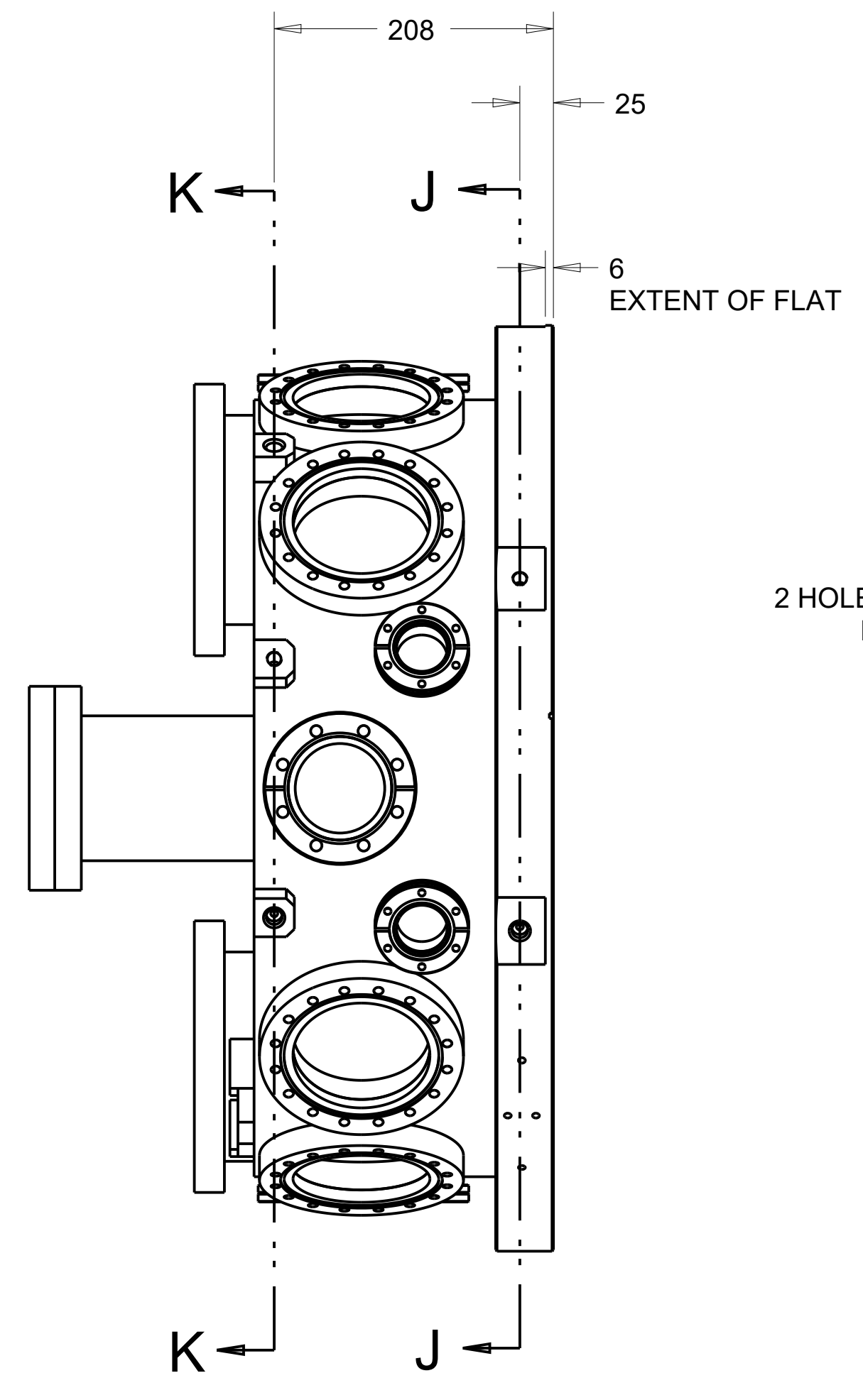
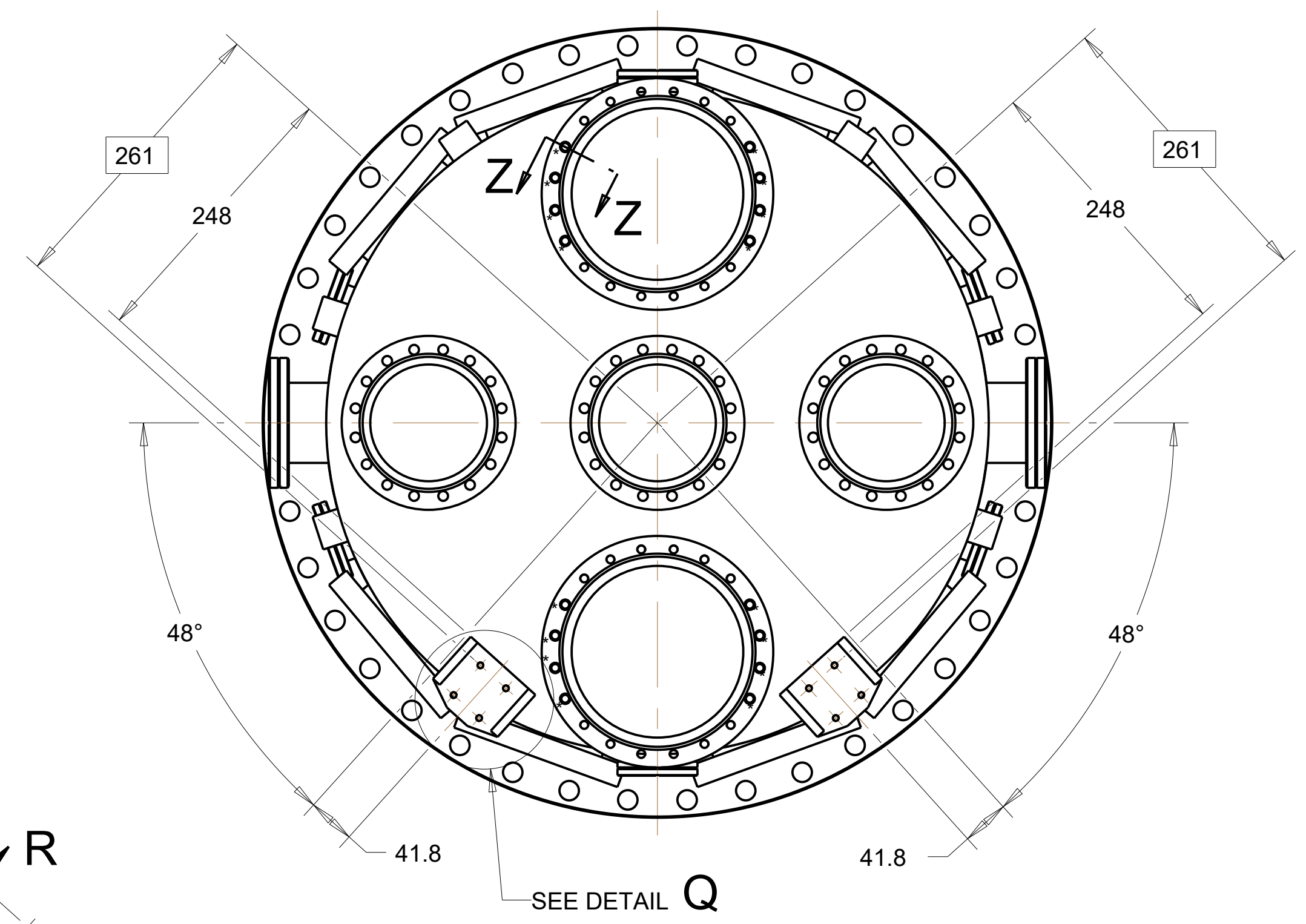


C'BORE $\varnothing 9^{+0.1}_0$ X 6 DEEP
ON 16 HOLES MARKED THUS *

SECTION Z-Z



| ISSUE | DATE | NAME | DESCRIPTION |
|-------|-----------|----------|-------------|
| D | 23-Apr-19 | D.SEDDON | SEE SHEET 1 |
| C | 02-Apr-19 | D.SEDDON | SEE SHEET 1 |
| B | 17-Sep-18 | D.SEDDON | SEE SHEET 1 |
| A | 11-Apr-18 | D.SEDDON | FIRST ISSUE |

| | | | |
|--|--------------|--------------------------------|-------------------------------------|
| THE UNIVERSITY OF LIVERPOOL DEPARTMENT OF PHYSICS | | | |
| PROJECT ISOL-WP2 | | | |
| TITLE MOVING DETECTOR CHAMBER WELDED ASSEMBLY STANDARD DN 100 CF FLANGE VERSION | | | |
| DRAWING PRACTICE AND TOLERANCE INTERPRETATION TO BS308 | | DRAWING NUMBER NP70-01-4250 | |
| MATERIAL ST. STEEL | SPEC 316L | DATE 11-Apr-18 | ARRGT. DRAWING NP70-01-1747 |
| TREATMENT NONE | CHECKED | APPROVED | SHEET 2 OF 2 SHEETS SCALE: 0.250 A0 |

| | | | |
|---|---|---|---------------------------|
| UNLESS OTHERWISE SPECIFIED:- ALL DIMENSIONS IN MILLIMETRES | METRIC SCREW THREADS TO BS3643 CLASS 6H/6g | DRAWING PRACTICE AND TOLERANCE INTERPRETATION TO BS308 | WELDING SYMBOLS TO BS 499 |
| SURFACE TEXTURE VALUES IN MICROMETRES UNLESS OTHERWISE SPECIFIED | TOLERANCES UNLESS OTHERWISE SPECIFIED | MATERIAL | ST. STEEL |
| SURFACE TEXTURE TO BE | MACHINED DIMS ± | SPEC | 316L |
| ng | 0.25 | TREATMENT | NONE |
| ANGULAR ± | 0.151 | CHECKED | |
| REMOVE BURRS AND BREAK SHARP EDGES | DO NOT SCALE | FINISH | NATURAL |