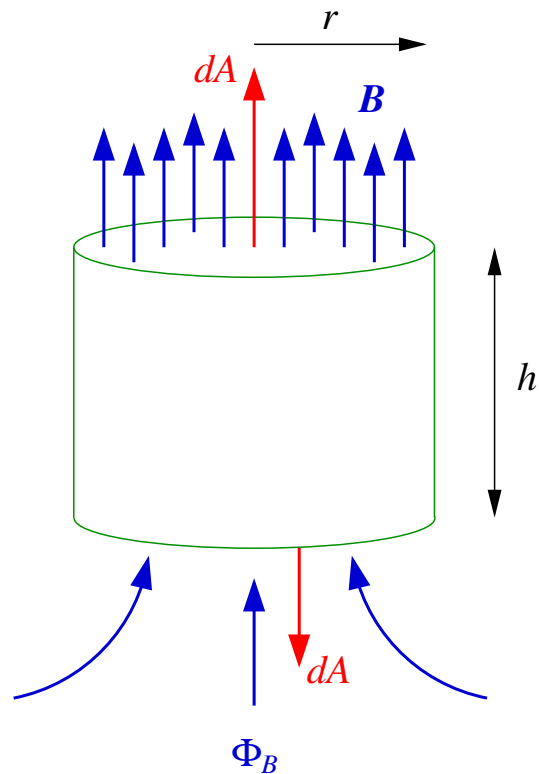


Introduction to L^AT_EX

Task 3

Set the following graphics within a figure with caption and label and refer to figure label from the text.



You should try at least two methods,

1. use the `graphicx` package and `pdflatex` to import the figure as pdf. To do this you need to add the following to the header:

```
\usepackage[pdftex]{graphicx}
```

and then import using:

```
\includegraphics[width=<size>,height=<size>]{graphics.pdf}
```

Now play with the `width`, `height`, `rotate` commands and see what happens.

2. use the auto convert of eps to pdf using the `epstopdf` package, so

```
\usepackage[pdftex]{graphicx}  
\usepackage{epstopdf}
```

then input using

```
\includegraphics[width=<size>]{graphics.eps}
```

then run with `pdflatex` and see what happens.